

Wetzin'kwa

COMMUNITY FOREST CORPORATION



ANNUAL
REPORT

JULY 1, 2022 to
JUNE 30, 2023



TERRITORY ACKNOWLEDGEMENT

The Wetzin'kwa Community Forest Corporation's tenure area is located on the Yintah of the Wet'suwet'en, Laksilyu and Gitdumden Clans, as well as a portion of the Gitseguecla Laxyip of the Gitxsan, Duubisxw Wilp.





TABLE OF CONTENTS

Territory Acknowledgement	1
Table of Contents	2
Chairman's Report	3
General Manager's Report	4
Operations Update	5
Harvesting	5
Operational Development Considerations	7
Long Term Planning	8
Enhanced Stewardship	9
Silviculture	12
Ecological Considerations	14
WCFC Grant Program Report	16
Shareholder Donations	20
Community Financial Benefits	21
Corporate Data	22





CHAIRMAN'S REPORT

Hello and thank you for exploring the 2022-2023 accomplishments of Wetzin'kwa Community Forest Corporation (WCFC) by reviewing our annual report.

As you may know, WCFC is the legal entity that operates a community forest tenure near the communities of Telkwa, Smithers and Witset.

The Wetzin'kwa Community Forest, awarded on January 1, 2007 by the provincial government, provides our communities with a greater share of both the responsibility and the benefits of local forest management. The access to a community forest creates an opportunity for the community to enhance their involvement in natural resource management.

WCFC conducts operations consistent with a set of 'Core Values' which include managing the lands, timber, and non-timber forest resources to:

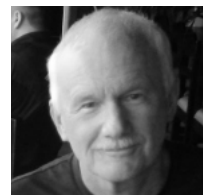
- sustain a financially viable forest resources business for the long-term benefit of residents in the Bulkley Valley;
- maintain and sustain functional integrity of ecosystems;
- protect water quality in watersheds;
- maintain a healthy balance of all plants and animals;
- recognize the Wet'suwet'en people and their culture;

- establish long lasting, respectful relationships between the partners;
- expand local small business opportunities and employment when and where feasible;
- provide a safe and environmentally friendly work environment;
- enhance outdoor educational and recreational opportunities;
- increase community involvement in resource management; and
- reflect community values in decision making.

We hope you enjoy learning about our most recent year's operations as you review the information to follow. On behalf of the Board we would like to take this opportunity to recognize and thank all of those who contributed to the success of the community forest during the past fiscal year. We look forward to a safe and productive 2023-2024.

Sincerely,

Gary Hanson
Co-Chairman
WCFC





GENERAL MANAGER'S REPORT



Hello everyone and thank you for taking the time to review the contents of WCFC's 2022-2023 Annual Report.

It is an honour for me to be in the position to report on the operations conducted by WCFC this past year. I find myself in the fortunate position to be able to report that WCFC has enjoyed another successful year in terms of safety in operations and has done so in an economical and environmentally sustainable fashion. The opportunity to work with the community and an excellent Board of Directors is truly special.

The Wetzin'kwa Community Forest is located on the traditional territories of the Wet'suwet'en, Laksilyu and Gitdumden Clans, as well as Gitksan territory. WCFC is thankful for the continuously evolving relationships with our First Nations partners and looks forward to our continued collaboration. WCFC strives to embed First Nations input and values into every community forest project that we approach.

In the 2022-2023 fiscal, the WCFC Board decided to invest in improving and updating its tree and ecological data inventories to increase their accuracy. As well, WCFC and the Office of Wet'suwet'en embarked on an exciting planning partnership to develop a Wet'suwet'en-led Land Use Plan for the tenure area. The results of these investments will ensure that WCFC's core values continue to be well managed on the land base into the future. WCFC is proud and excited to be a part of the changes occurring in planning and First Nations partnerships in BC's forestry sector.

The following pages provide information on the highlights and challenges that WCFC faced in 2022-2023. WCFC is in its 2nd year of a 5 year cut control period and is on track to meet its Annual Allowable Cut (AAC), which we take pride in as an indicator of sustainable forestry. WCFC had a profitable year and the WCFC Board of Directors was able to provide many community benefits as a result, as well as making sound decisions to ensure that these benefits are sustained into the future.

I would like to take this opportunity to thank all the Board Members from WCFC for their continued support and confidence in WCFC's ongoing operations. We at Silvicon Services Inc. are thankful to be a part of managing WCFC and will continue to ensure that the views of all community members are considered throughout our daily practices.

Sincerely,
Aurora Lavender, RPF





OPERATIONS UPDATE

HARVESTING

During the 2022-2023 fiscal year, approximately 75,507m³ of timber was harvested from the tenure area. The majority of this volume (57,743m³) were sawlogs sold and delivered to Pacific Inland Resources in Smithers. 11,642m³ of dry balsam pulp logs were sold and delivered to Seaton Forest Products Ltd. In addition to these delivered volumes, 6,123 tonnes of harvesting by-product (e.g. tops, rot, defect fibre etc.) was delivered to Pinnacle Pellet in Smithers.

WCFC continues to improve the overall fibre utilization from every hectare harvested, which in turn has dramatically reduced the amount of annual slash pile burning required to abate the post-harvest fire hazard. Firewood deliveries to Witset continue to occur when our operations are active.



ROAD BUILDING AND MAINTENANCE

During the course of the year WCFC constructed 5.2km of all season roads and 5.65km of winter roads (temporary roads). Our road construction and maintenance program resulted in upgrading 0.28km of existing road to facilitate current and future timber extraction. WCFC also conducted bridge and infrastructure maintenance as required throughout the year on all tenured roads within the operating area and completed 8.63km of manual brushing of existing right-of-ways during this past fiscal as well as bridge inspections.



WETZIN'KWA COMMUNITY FOREST ANNUAL REPORT 2022/2023

WCFC current cut control position is depicted below. Please note that the table below is based on the calendar year and does not correspond directly to WCFC's fiscal year.

	2022	2023	2024	2025	2026	Total
Annual allowable cut (m³)	30,304	30,304	30,304	30,304	30,304	151,520
Harvested volume (m³)	24,372	34,492	0	0	0	58,854
Cut from previous cut control period (m³)	0	0	0	0	0	0
Total volume remaining in cut control period (m³)						92,656

*Estimated volume to be delivered prior to year's end

HARVESTING & CONSTRUCTION CONTRACT OPPORTUNITIES

WCFC maintains a local contractor select bidders list to ensure that the contracting opportunities generated from the community forest's operations provide a direct benefit to local communities and their associated work forces.

WCFC would like to thank the local contracting community for providing the expertise needed to conduct our operations at a high standard. During the 2022-2023 fiscal year our primary harvesting, construction and road maintenance contractors were:

- Schippers Creek Contracting Ltd.
- Long Road Contracting Ltd.



- Palms Grading Ltd.
- Coppermoon Contracting Ltd.
- Northern Industries Ltd.

SAFETY

WCFC has a long-standing commitment to provide a safe work environment during all phases of operations. The woodlands work is done by BC Forest Safety Council SAFE Certified companies. Prior to any work being completed under contract with WCFC, a safety pre-work meeting is conducted to ensure all known safety hazards are identified and appropriate safety measures are in place. Routine inspections on safe work practices



are incorporated into supervision inspections and all operators are required to make available their safety management systems and documentation for review by WCFC.

The provision of a safe work environment and reinforcement of safe practices resonates through the daily operations on the community forest tenure. It is with great pleasure that we can report no incidents of serious injury or fatality associated with operations since the establishment of the community forest tenure.

POWER'S CREEK FIRE

On the evening of July 7th, 2023, the Power's Creek Fire broke out in WCF due to a lightning strike in hot, dry conditions. This fire affected several private landowners in the Tatlow and Morgan Rd area with an evacuation order and alert areas established that evening due to the fire. BC Wildfire Service (BCWS) crews, volunteer firefighters and local contractors worked with air support and heavy equipment to put in guards, suppress the fire and protect homes and properties. The fire suppression efforts were effective. The WCFC Fire Trailer was deployed with the Smithers Volunteer Firefighters and used to protect private properties and homes from the wildfire. WCFC was also able to provide resources in the form of deploying several line locators to assist on the fire, and provided up-to-date information to the community via social media outlets. WCFC is very thankful for the immediate and thorough response to this fire and that no homes were burned, and for the information provided on the BCWS Current Situation Map. We also recognize that this wildfire season was BC's worst fire season on record and are thankful for the efforts of all the hardworking firefighter crews across the province this past season. The Power's Creek Fire was 34.1ha in size. Following this, WCFC will be working closely with BCWS, adjacent tenure holders and the District of Skeena-Stikine to continue wildfire risk reduction in high an extreme risk areas in the Wildland-Urban Interface (WUI).



OPERATIONAL DEVELOPMENT CONSIDERATIONS

The planning of annual harvesting is a complex process. WCFC strives to strike a balance in timber development activities in consideration of all natural resource values. We continue to seek out all possible salvage opportunities related to forest damaging agents. The key goals of this strategy are to reduce impacts on the long term timber supply





associated with these damaging agents and to reduce the landscape and stand level wildfire fuel loads where possible. As the community forest tenure contains significant dead timber volumes, annual harvest plans have primarily been comprised of stands that contain Mountain Pine Beetle and Balsam Bark Beetle activity.

During WCFC's current 5 year cut control period, forest health concerns and damaged timber remain the primary target of harvest. The planning strategy also includes an integrated approach to forestry. WCFC strives to create a mosaic of forest age and

stand type across the land base throughout operations by considering the development of areas within the community forest comprised of more challenging terrain.

WCFC spends considerable energy planning and preparing for the future. Road locations and long term forest conditions are continually assessed during the planning of timber development. Decisions relating to more permanent types of access verses short term access are critical operational decisions.

Appropriate considerations must be made for long term access into a new area, both in terms of short and long term economic constraints in addition to habitat management, recreational considerations and the need for access by first responders in the event of a catastrophic wildfire event.

The operational considerations relating to the type of timber to harvest and the access requirements desired are just a couple of factors involved in annual activities.

LONG TERM PLANNING

The operational considerations relating to the type of timber to harvest and the access requirements desired are just a couple of factors involved in annual activities.

In 2022-2023, WCFC made significant investments towards upgrading its Light Detection and Ranging (LiDAR) technology, which helps produce detailed terrain models for development planning and increases accuracy in management planning.

These LiDAR upgrades, when combined with further analysis and field sampling, are now being utilized to create an Enhanced Forest Inventory for the WCFC tenure area with the help of Ecora Engineering and Resource Group. These inventories are a cutting edge tool that will allow WCFC to monitor changes in forest health over time



and more accurately understand the complexity on the land base. this data can then be employed for calculating sustainable AAC and mapping old growth areas, which allows WCFC to manage for the myriad of existing values on the land base into the future.

WCFC has also been working with provincial research ecologist, Will Mackenzie and his team to refine the Predictive Ecosystem Mapping (PEM) for the tenure area through field data collection and modelling. The result of this data collection will be refining the provincial Biogeoclimatic Zone areas within the forest and producing a more accurate map of valued ecosystems. This project is a joint effort with the Office of Wet'suwet'en in an effort to update existing PEM layers within Wetzin'kwa Community Forest and assess the status of cultural values utilizing this dataset.

These investments that WCFC has made towards upgrading its inventories ensure that the forest is managed with the most current, up-to-date information available, ensuring sound management into the future.

LAND USE PLANNING

WCFC embarked on a Land Use Planning (LUP) process this year. This exciting, collaborative partnership represents a modernized planning process that focuses on a partnership between WCFC and our Wet'suwet'en partners, where stakeholders and the local community are consulted through a collaborative framework. WCFC is located on the Yintah (traditional territory) of the Laksilyu and Gitdumden Wet'suwet'en Clans. This planning process will involve both social and technical components. This LUP is



being developed between the Wet'suwet'en and WCFC, the result of which will be an effective, sustainable, dynamic and long-term improvement in land management and increased certainty for all parties.

ENHANCED STEWARDSHIP

Following many years of successful resource and financial management WCFC embarked on a more aggressive approach to investing directly back into the community forest land base. The



WCFC Enhanced Stewardship Program is growing and is intended direct investments towards priority activities within the community forest that our outside of legislated requirements that contribute to WCFC's core values. WCFC's Enhanced Stewardship budget is intended to provide tangible benefits for local residents by reinvesting profits from WCFC operations back into the land base in a meaningful way. Some of the projects that were initiated and or completed within the 2023- 2024 fiscal year include:

Wildfire Risk Reduction (WRR) Fuels Reduction and Promotion

For the last several years, WCFC has been pursuing the implementation of several wildfire risk reduction prescriptions through funding from the Crown Land Wildfire Risk Reduction program



administered through the BC Community Forest Association and the Forest Enhancement Society of BC (FESBC). These prescriptions make up a shaded fuel break along Hudson Bay Mountain Road. This was an area identified as an extreme hazard within the WUI in WCFC's Strategic Wildfire Hazard Mitigation Plan, developed in 2019 under funding from FESBC. A shaded fuel break creates a defensible location where fuels have been modified that can be used to increase the probability of success for fire suppression activities.

The primary objectives of this project are to improve access and egress routes within this high recreation use area, protect critical infrastructure, and improve both public and wildland firefighter safety through the modification of forest fuels adjacent to the Hudson Bay Mountain Road. WCFC continues to complete thinning, spacing, pruning and surface fuel reduction treatments under this funding with the help of local contractors including:

- Schippers Creek Contracting Ltd.
- CAS Ventures Ltd.
- RCV Mechanical Ltd.

The success of this project would not be possible without the support and help of key community partnerships. These partners include:

- Ministry of Forests
- BC Wildfire Service





- BC Mountain Resorts Branch
- Recreation Sites and Trails BC
- Office of Wet'suwet'en
- Recreational User Groups

WCFC is proud to work together with provincial and local organizations to improve community resiliency and protect important community values. Work is ongoing on this initiative and is anticipated to continue through 2023-2024 and beyond.

WCFC continues to coordinate with local entities and District representatives to reduce landscape level wildfire risk.

Huckleberry Planting Project

The huckleberry planting project was started in collaboration with the Office of the Wet'suwet'en. The primary objective of the Huckleberry Planting Project is to elevate the social and cultural ecology through the propagation of huckleberry sites. The overarching aim is the

revitalization of historical huckleberry sites, driven by the preservation of cultural values, notably encompassing food sustainability and the counteraction of land loss. Beyond its cultural significance, this project serves a dual role as a research trial, actively seeking to identify the most effective methods for rejuvenating huckleberry sites to yield berries. This research entails collaboration with the Wet'suwet'en House members, the Office of the Wet'suwet'en, and local biologists, collectively pooling expertise. The insights garnered from this collaborative endeavor will subsequently inform future huckleberry planting projects within Wetzin'kwa Community Forest, thus ensuring a sustainable and informed approach to huckleberry site restoration. The first plant was planned for October 3rd, 2023. 500 huckleberry plants were planned to be planted on approximately 0.5 ha in a partial cut area along the ski hill road. This is to be the first of many trial plants in the community forest.

Twin Falls Recreation Site improvements and accessibility upgrades. WCFC established a partnership with RSTBC to repair and improve existing recreation site features at Twin Falls, with a focus on user accessibility. with the help of Glenys SnowDymond (Accessibility Expert). In June 2023 a variety of work was completed including:

- Two accessible benches and concrete pads were installed, one at the main rec-site kiosk, and the other along the trail.
- Three accessible picnic tables and concrete pads were installed, one at Campsite 5, and two along the trail.
- The trail up to the last picnic table was upgraded with 3/4 crush and compacted to meet accessibility standards.
- Material was added and leveled at main rec-



- site area to meet accessibility standards. Around kiosk, outhouse and garbage bins
- New fire pit was installed at Campsite 3

National Forestry Week - Golden Token Hunt

To celebrate National Forest Week, WCFC offered a photo scavenger hunt contest called the “Hunt for the Golden Tokens”. Five golden tokens were hidden at various locations throughout the community forest and community. Each location highlighted a group or project in which the community forest supports through the Grant Program. Riddles were provided as hints for each location. Participants had to solve the riddles, go find the tokens, and submit a photo as proof to be entered for prizes donated by WCFC and local businesses (with bonus prizes for costumes and creativity).

WCFC was thrilled with the participation and positive feedback from both area residents and visitors, with many participants expressing that it provided a great reason to get out and explore the area with their friends and families. We look forward to making this an annual event.

Community S100 Basic Fire Suppression and Safety Course

In June of 2023, WCFC provided funding and equipment for 9 members of the public to attend an S100 Basic Fire Suppression and Safety Course, instructed by Sean Fraser of Hyland Backcountry Services Ltd. Students learned wildfire suppression and incident command theory in the classroom, followed by hands-on practice using tools from WCFC's wildfire trailer.

Bat Box Project

5 bat boxes were installed along the cross country ski trails as a stewardship intervention by WCFC to support biodiversity and wildlife restoration efforts by creating bat habitat in the community forest, particularly for Little Brown Myotis bats. WCFC worked with a local biologist to select these locations in natural and harvested openings in proximity to a wetland complex. The boxes were monitored over the summer and so far 4 of the 5 are already being used. These boxes will continue to be monitored in the upcoming years. Due to the success and interest in the project more boxes will be purchased and installed in the following year.

Silvern Gathering Area

In 2022-2023, WCFC worked closely with the Office of Wet'suwet'en and Forsite Consultants Ltd. to begin developing a prescription for the cleanup of large woody debris and a low intensity burn for the Silvern Gathering Area to promote the return of cultural plants. The intentions of this prescription are to support indigenous-led fire practices and the enhancement of valued ecosystem components on the Yintah, helping to return the productivity of culturally significant plants to this historic Wet'suwet'en forest garden. WCFC is currently working closely with the Office of Wet'suwet'en, BCWS, the District of Skeena-Stikine, and the Kwen Beegh Yex House on timelines, collaboration, and outcomes for this work, and hopes to utilize the knowledge of all parties involved for a positive result. WCFC is interested in supporting the return of fire to the landscape as a tool for reducing the impacts of catastrophic wildfires.



SILVICULTURE

WCFC planted 132,680 seedlings in July 2022 summer plant. The seedlings were purchased from PRT. 65,320 seedlings were planted by Windfirm Resources and 67,360 were planted by Whanau Forestry. Summer plant is planned for the upcoming 2023-2024 fiscal year.

CAS Ventures was contracted to brush 9 hectares in the Fall 2023. No brushing occurred in the 2022-2023 fiscal year.

SURVEYS

Approximately 470 hectares of silviculture surveys were completed in the past fiscal year:

- 76.6 ha of multi-story regeneration surveys
- 30.1 ha of stocking surveys conducted two or three years after planting
- 149 ha of walk-through surveys intended to monitor stands for forest health and general performance at stand ages 5-10 years
- 13.8 ha of free-growing surveys completed to determine if minimum restocking obligations had been achieved

Of note, free-growing survey results continue to indicate some of the earliest harvesting complete under WCFC tenure are now achieving “free-growing” status. WCFC’s current tally of free growing stands is **346.4 ha**.

SILVICULTURE ACCRUAL / LIABILITY

Silviculture accrual calculations are based on conservative estimates of various silviculture investments required to achieve free-growing stands. The current accrual rate is set at \$4.50 per m³ of harvest.

To date, WCFC has accrued significant revenue to address projected and/or potential silviculture treatments that may be required on existing plantations. A recent reconciliation of accrual amounts verses all actual costs incurred indicates that for all phases, total expenditures are under budget. WCFC has committed to reviewing the accrual provisions in the future as more of the initially harvested stands achieve free-growing status and may make adjustments to the accrual amounts over time.





ECOLOGICAL CONSIDERATIONS

At its core, WCFC is managed for multiple values, not just timber. In order to conduct operations in a sustainable fashion, WCFC has a duty to maintain ecological values through sound management practices.

WCFC frequently goes beyond the minimum requirements set forth in its Forest Stewardship Plan (FSP), the Forest Range and Practices Act, and regulations set by government. This includes implementing alternative harvest regimes such as small patch and commercial thinning opportunities, designing blocks for increased wildlife value, retention of deciduous forest components, increasing riparian buffers, and minimizing soil disturbance through "total chance planning". WCFC has also added Fire Management Unit stocking standards for the east area of the community forest in its FSP, which will allow for more deciduous stems (cottonwood and aspen) within cutblocks. WCFC maintains a strong relationship with the Office of Wet'suwet'en and enjoys the benefit of an open dialogue around specific harvesting plans.

WCFC reforestation efforts have been to replant the species mix that existed on site pre-harvest by conducting surveys to ensure the best survival based on ecological classification. Reforestation efforts consist of planting lodgepole pine and hybrid spruce, with advanced subalpine fir regeneration retained on site. Spruce, although slower growing initially, tends to be more resilient than lodgepole pine to early stand forest health problems. WCFC continues to seek opportunities for planting alternative species as a progressive action towards accommodating a changing climate, including western larch.

As a policy, WCFC does not use pesticide and fertilizer on cutblocks within the community forest and instead manual brushing is conducted. WCFC utilizes a custom grass seed mix to re-vegetate disturbed sites (roads, landings, ditches) to minimize the establishment of invasive species and control soil erosion.

WCFC currently recognizes the recommendations of the Old Growth Deferral areas, and our management strategy is currently to not harvest within them. As well, the ages of all stands within or outside of the Old Growth Deferral areas in Wetzin'kwa Community Forest are verified prior to development to ensure that old growth values exist into the future. However, the recent upgrades to forest inventory and ecosystem mapping that WCFC has pursued will result in improved management of all values across the land base, including old growth values. WCFC has embarked on the creation of a Wet'suwet'en-led LUP for the WCFC tenure, the result of which will be an effective, sustainable, dynamic and long-term improvement in land management, and will include a strategy for old growth management that is developed with our Wet'suwet'en partners.

WCFC continues to pursue and support research and innovation opportunities for supporting improved management of ecological values within the community forest. This year WCFC supported provincial ecology research through PEM field data collection and silviculture trial planting, as well as supporting the Bulkley Valley Research Centre on planning and monitoring for improved retention of old forest structure for wildlife. WCFC's Enhanced Stewardship Program also supports ecosystem health and habitat improvement where opportunities exist. WCFC continues to seek opportunities to maintain the ecological integrity and function of the community forest.





WCFC GRANT PROGRAM

ABOUT

The Community Grant Program was established to distribute profits from the operation of the Wetzin'kwa Community Forest tenure back into the community. The program's objective is to provide support for a broad range of projects and initiatives that will return the greatest long-term benefit to Bulkley Valley residents. This year, the WCFC Board of Directors was pleased to increase the amount provided to grant recipients.

ELIGIBILITY

In order to qualify, proposals must be for activities carried out in the Witset, Smithers and Telkwa area by secular, not-for-profit organizations or registered charities. Grant funding may be applied to capital expenditures, staffing costs and/or program planning.

Wetzin'kwa's Board of Directors has established the following categories:

1. Arts and Culture
2. Recreation
3. Environment, Conservation, and Natural Resource Management
4. Social Services
5. Community Economic Development



PROCESS

Each April and May, advertisements are posted in the local paper, on the website, and on the Facebook page indicating that the annual intake period has commenced. Grant applications are received up to May 31st.

Grant reviews are conducted by the WCFC Board following a regimented process that culminates in an all-day meeting during the last week of June.

The grant review and award process is a lengthy and in-depth affair. The grant applications received always exceed the annual budget available making final decision around grant awards an extremely difficult process to adjudicate. To celebrate, the WCFC Board of Directors hosts an annual Grant Recipient Day in July of each year where representatives from recipient organizations come to sign contracts, pick up cheques, and meet the WCFC Board.



LEGACY PLANNING

WCFC has established a Legacy Fund intended to ensure the community grant program is sustainable even in years where limited or no harvesting has occurred. Over the last decade it has been exciting to watch the grant program succeed. The Board believes very strongly in the social benefits of this key program of WCFC.

2022-2023 GRANT PROGRAM RECIPIENTS

Through the 2022-2023 WCFC Grant Program, WCFC distributed **\$350,813.41** to successful community applicants. WCFC annually accepts applications for the Grant Program and is looking forward to providing financial support to more community initiatives over the long term.

Photo WCFC Board 2023 (L to R: Gary Hanson, Kira Westby, Lindsay Lange, David DeWit, Colin McLeod, Jennifer Moyle Missing; Margaret Olmstead)



2022-2023 GRANT PROGRAM RECIPIENTS

The WCFC would like to congratulate the following successful applicants in the 2022-2023 Grant Program:

Organization Name	Project Title
First Responders Café Society	First Responder Peer-Led Support Group Program
Telkwa Reading Centre Society	Reading Centre Accessibility
Smithers Community Services Association-ELMS program	ELMS program Coffee & Talk and Community Connection
BV Folk Music Society	Smithers Adult and Youth Guitar Camps
Cycle 16 Trail Society	Environmental Assessment and Permit Support
Telkwa Volunteer Firefighter's Association (TVFA)	Wildland Firefighting Outfits
SD54 -Muheim Elementary School Telkwa Elementary School	Harmonic Unity
BV Hospice Society	Corporate sponsorship for the Bulkley Valley Hospice Society - to cover approximately 33% of the salary for the Hospice Coordinator of Volunteers
Friends of the Smithers Library	Community Programming for Youth and Adults
Bulkley Valley Racquet Sports Society	The Heart of Pickleball
Smithers Volunteer Firefighter Association (SVFFA)	SVFFA Wildland Skid Unit and PPE
St Joseph's School	Improvements to gym lighting and entry flooring
Lake Kathlyn Protection Society	Weed Harvester Launch Rails Replacement
1st Smithers Group - Scouts Canada	2023-2024 Scout Programming and Administration
Smithers Beekeeping Club	Varroa Mite Control - InstaVap Oxalic Acid Vapourizer Kit
Bulkley Valley Agricultural and Industrial Association - BVAIA	Aluminum Bleachers
Goodacre Place (SCSA)	Wellness Fund Program
BV Otters Swim Club	Inspiring Youth - Benefiting All - Youth Coaching for BVOSC
Valley Youth Fiddlers	2023/2024 Valley Youth Fiddlers Workshop Program
Northern Brain Injury Association	Injury Prevention and Community Education
Royal Canadian Legion Br63 Smithers	Support for Volunteer Janitors
Dze L K'ant Friendship Centre	Cultural Centre entrance revitalization project
Smithers Golf Club	Winter Walking Trail Equipment Purchase



WETZIN'KWA COMMUNITY FOREST ANNUAL REPORT 2022/2023

Organization Name	Project Title
Treehouse Housing Association	Telkwa Action Project
Bulkley Valley Search and Rescue	BVSAR Operations Centre Construction - Phase 3
Northern Edge Sport Association	Safety Matting Replacement Project
Driftwood School Restoration Committee (DSRC)	Outhouse Repair
Bulkley Valley Tool Library Society	Bulkley Valley Tool Library Phase 2: Building Momentum
BV Pool	BV Pool & Rec. Phase 1 Expansion Project
Bulkley Valley Research Centre (BVRC)	Planning & Monitoring Support for Improved Retention of Old Forest Structure for Wildlife and Other Values: Phase 2
Myriad Dance Projects Society (MDP)	The River
Groundbreakers Agriculture Association	Kids Dig Food gardening, cooking, forest foraging and seed saving workshops
Muheim Elementary School Outdoor Ed. Program	Muheim Outdoor Ed. basecamp
Bulkley Valley Bowmen Association	Archery Club Mower Replacement
Back Country Horsemen of BC Northwest Chapter	Solar Powered Water Pump
Culturally Modified	EXISTENTIAL: MUSIC, ART, AND THEATRE FROM SMITHERS' TENT CITY: Helping homeless youth (and other motivated creators) find their creative voice
Silvern Trail Society	Horlings Trail Revitalization Project
Canadian Ski Patrol - Smithers Zone	CSP Smithers Infrastructure Upgrades
Smithers Snowmobile Association	Replacement of Winfield Creek Snowmobile Cabin (Old Microwave Cabin)
Smithers Mountain Bike Association	Ptarmigan Trail Upgrades and Enhancements
Bulkley Backcountry Ski Society	Hankin Fire Lookout Cabin Upgrades
Telkwa & District Seniors Society	Upgrade to Senior Centre Windows

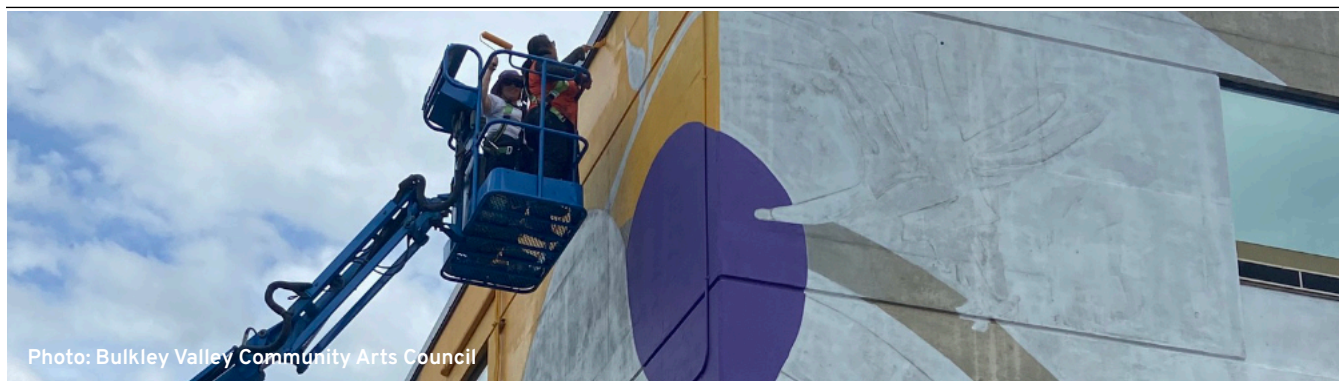


Photo: Bulkley Valley Community Arts Council



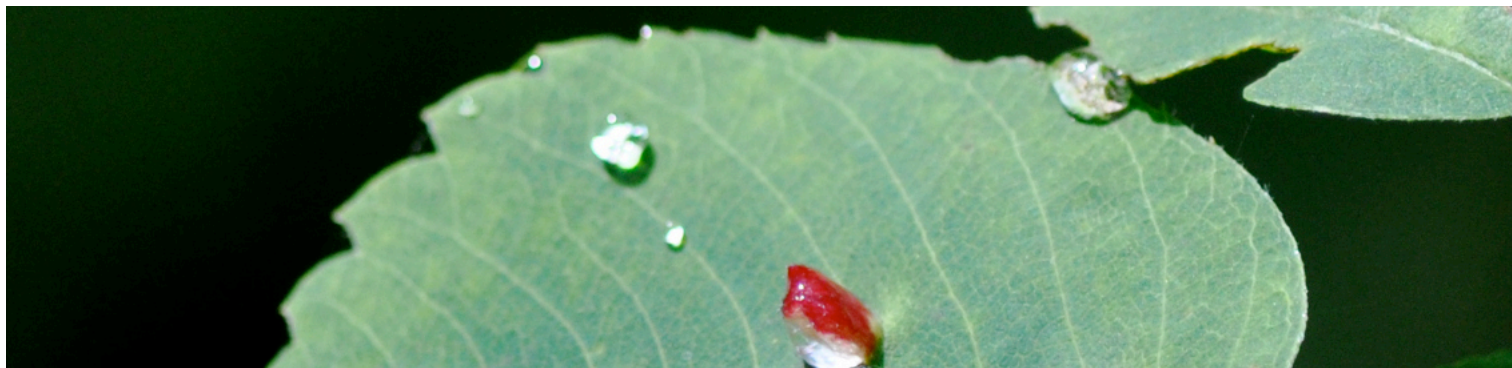


SHAREHOLDER DONATIONS

WCFC works hard to respect and acknowledge its key Shareholders (Office of the Wet'suwet'en, the Village of Telkwa and the Town of Smithers) on an annual basis. During profitable years this respect manifests itself in part as Stakeholder Donations to these three entities.

In 2022-2023, the WCFC was able to provide each key Shareholder a contribution of \$50,000 to assist in the funding pressures they have fulfilling their respective mandates.





COMMUNITY FINANCIAL BENEFITS

WCFC provides a wide range of financial benefits to the community, in addition to the Community Grant program and Stakeholder Donations. WCFC seeks to involve the community in local forest management, and involvement includes sharing the financial benefits of successful management.

Summary of Community Financial Benefits (2022-2023)

Item	Amount	Description
Stumpage	\$134,054	Generated from the sale of timber and used by the province for health care, education, infrastructure, etc.
Annual Rent	\$11,212	Paid to the Crown and utilized by the province for health care, education, infrastructure, etc.
Community Grants	\$350,813	Distributions by the WCFC to a wide array of community groups and projects
Smithers Community Services Association	\$1,000	Support for the Christmas Hamper program
BV Foundation	\$3,300	Provision for the award of bursaries for students from the three communities associated with the WCFC
Stakeholder Donations	\$150,000	Provided to the Stakeholders (Town of Smithers, Village of Telkwa, and the Office of the Wet'suwet'en) to utilize as they see fit
Salvation Army	\$1,000	Food bank contribution
TOTAL	\$651,379	





CORPORATE DATA

BOARD OF DIRECTORS



DAVID de WIT
Director, Office of the
Wet'suwet'en



MARGARET OLMSTEAD
Director, representing the
community at large



LINDSAY LANGE
Director, Village of Telkwa



Jennifer Moyle
Director, representing the
community at large



GARY HANSON
Director, Town of Smithers



KIRA WESTBY
Director, representing the
community at large



COLIN MacLEOD
Director, representing the
community at large

FOREST MANAGEMENT



AURORA LAVENDER, RPF
General Manager,
Silvicon Services Inc.



JON DEHOUWER, RPF
Operations Manager,
Silvicon Services Inc.

ADMINISTRATION

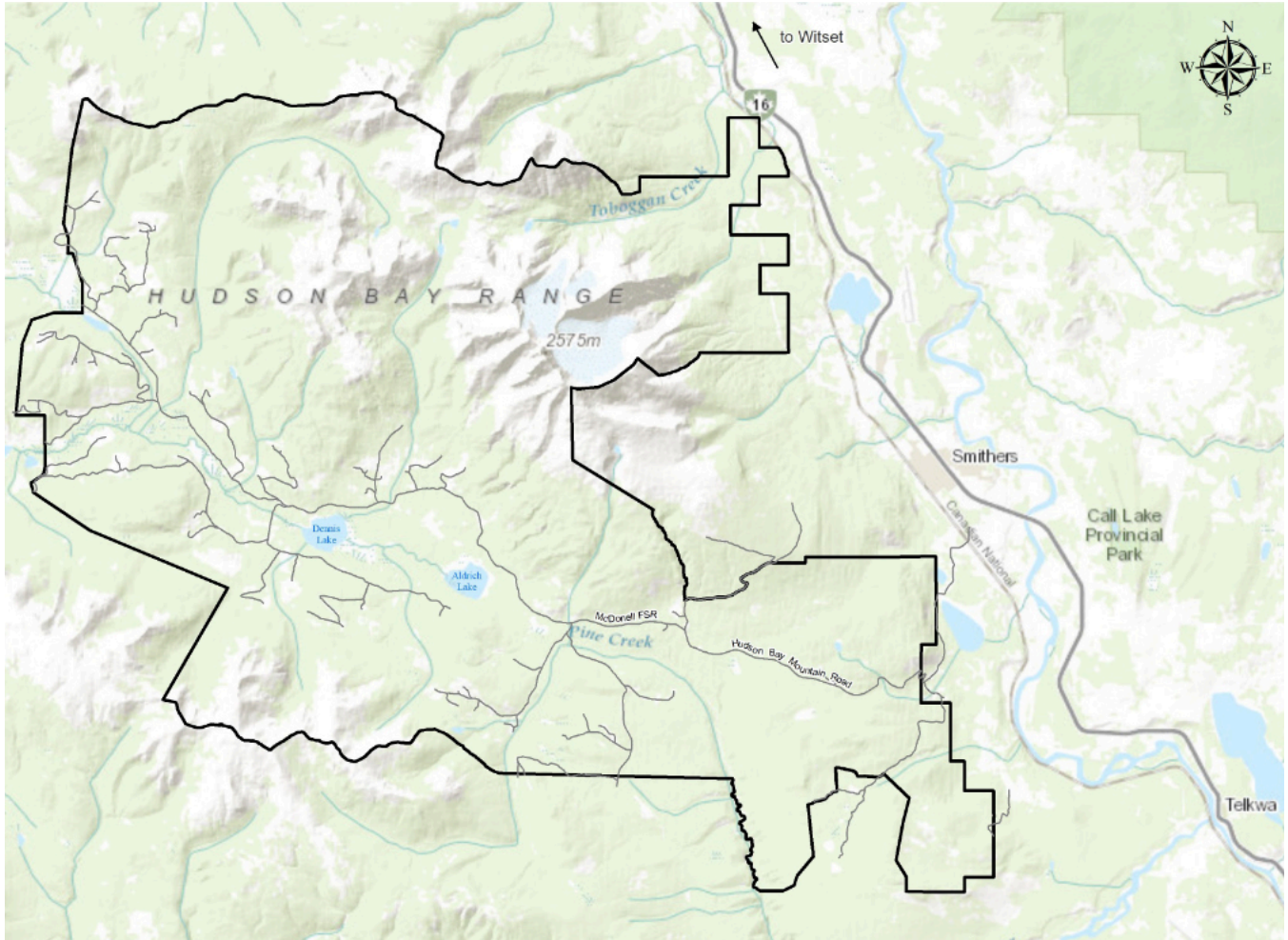


MARIE GRULICOVICH
Administrative Assistant,
Silvicon Services Inc.

CONTACT (250) 847-3680
PO Box 565, Smithers, BC
V0J 2N0 www.wetzinkwa.ca



LOCATION MAP



APPENDIX A:



FINANCIAL STATEMENTS





MISSION STATEMENT

Wetzin'kwa Community Forest Corporation will manage a profitable community forest tenure while providing good forest management stewardship that will sustain forest resource values for future generations.

